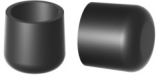


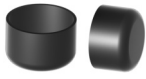
## 2

## Caps

For round, rectangular, square, oval, elliptical tubes, and wires.

**A**

Page: 2

**A-PVC**

Page: 4

**AS-PVC**

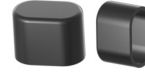
Page: 5

**UD**

Page: 6

**FOF**

Page: 7

**FOK**

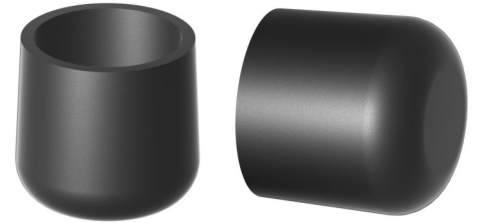
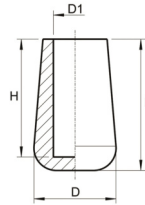
Page: 8

**U**

Page: 9

## Caps for round tubes

Application: for round tubes  
Material: Polyethylene  
Standard-Colour: black, white



Order No.	Article	Head Ø	Inside Ø	Length	Height	Colour	PU*	MOQ**
		D	D1	L	H			
050000030001000	A 3	5,5	2,9	8,8	7,9	black	10000	-
050000030003000	A 3	5,5	2,9	8,8	7,9	white	10000	10000
050000040001001	A 4	5,5	3,9	8,8	8,0	black	1000	25000
050000040003001	A 4	5,5	3,9	8,8	8,0	white	1000	25000
050000050001000	A 5	7,5	5,0	8,0	6,7	black	10000	-
050000050003000	A 5	7,5	5,0	8,0	6,7	white	10000	10000
050000060001001	A 6	7,5	5,9	12,0	9,5	black	1000	-
050000060003000	A 6	7,5	5,9	12,0	9,5	white	20000	20000
050006500001000	A 6,5	9,1	6,4	10,7	8,0	black	10000	10000
050006500003000	A 6,5	9,1	6,4	10,7	8,0	white	10000	10000
050000070001000	A 7	9,1	6,9	10,7	8,0	black	10000	-
050000070003000	A 7	9,1	6,9	10,7	8,0	white	10000	10000
050000080001000	A 8	11,5	7,9	13,0	11,4	black	10000	-
050000080003000	A 8	11,5	7,9	13,0	11,4	white	10000	10000
050000100001000	A 10	13,4	9,7	14,6	12,1	black	5000	-
050000100003000	A 10	13,4	9,7	14,6	12,1	white	10000	10000
050000110001000	A 11	15,5	10,9	16,0	13,2	black	10000	-
050000110003000	A 11	15,5	10,9	16,0	13,2	white	10000	10000
050000120001000	A 12	15,5	11,9	16,2	12,9	black	10000	-
050000120003000	A 12	15,5	11,9	16,2	12,9	white	10000	10000
050000130001000	A 13	16,5	12,9	18,0	14,0	black	10000	-
050000130003000	A 13	16,5	12,9	18,0	14,0	white	10000	10000
050000140003000	A 14	17,0	13,7	16,0	13,2	white	5000	5000
050000140001000	A 14	17,0	13,7	16,0	13,2	black	5000	-
050000160003000	A 16	19,7	15,9	21,2	17,0	white	5000	5000
050000160001000	A 16	19,7	15,9	21,2	17,0	black	5000	-
050000180001000	A 18	22,0	17,5	26,1	24,4	black	2500	2500
050000190001000	A 19	22,3	18,8	23,2	9,2	black	5000	-
050000190003000	A 19	22,3	18,8	23,2	9,2	white	5000	15000
050000200003000	A 20	24,2	19,8	23,3	18,9	white	5000	-
050000200001000	A 20	24,2	19,8	23,3	18,9	black	5000	-

Please note that the product illustrations are exemplary images that could deviate from the ordered/delivered products.

All of the dimensions are in mm should nothing to the contrary be stated.

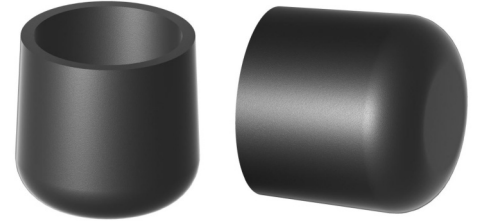
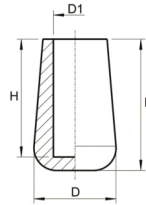
\*PU = Packaging Unit, SW = Spanner opening, n.w. = not detachable, o. K. = excl. The head, o. B. = excl. The collar, m. R. = with the radius, MOQ = Minimum Order Quantity.

\*\* MOQ: Parts with MOQ, set-up costs may apply.

We exclusively sell to the trade and industry. Please note our minimum order quantities and the minimum order value per delivery. We would be pleased to send you an offer that is tailored to your needs should you require special colours, deviating dimensions, bioplastics, or larger order quantities.

## Caps for round tubes

Application: for round tubes  
Material: Polyethylene  
Standard-Colour: black, white



Order No.	Article	Head Ø	Inside Ø	Length	Height	Colour	PU*	MOQ**
		D	D1	L	H			
050000210001000	A 21	26,4	21,0	27,1	21,4	black	3000	-
050000210003000	A 21	26,4	21,0	27,1	21,4	white	3000	3000
050000220001000	A 22	25,4	21,6	24,1	20,1	black	3000	-
050000240001000	A 24	28,4	23,7	27,5	21,1	black	3000	-
050000220003000	A 22	25,4	21,6	24,1	20,1	white	3000	6000
050000250003000	A 25	28,1	24,9	30,6	24,8	white	2000	4000
050000250001000	A 25	28,1	24,9	30,6	24,8	black	2000	-
050000270001000	A 27	32,8	25,8-26,5	30,6	25,4	black	1000	-
050000270003000	A 27	32,8	25,8-26,5	30,6	25,4	white	1000	1000
050000280001000	A 28	32,8	27,5	28,8	23,9	black	1000	-
050000280003000	A 28	32,8	27,5	28,8	23,9	white	1000	3000
050000300001000	A 30	33,8	29,5	29,2	24,2	black	1000	-
050000300003000	A 30	33,8	29,5	29,2	24,2	white	1000	3000

Please note that the product illustrations are exemplary images that could deviate from the ordered/delivered products.

All of the dimensions are in mm should nothing to the contrary be stated.

\*PU = Packaging Unit, SW = Spanner opening, n.w. = not detachable, o. K. = excl. The head, o. B. = excl. The collar, m. R. = with the radius, MOQ = Minimum Order Quantity.

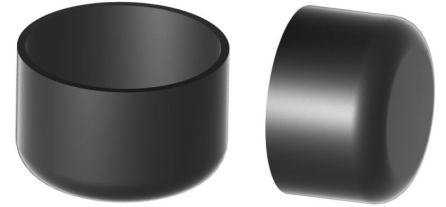
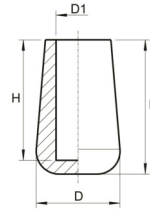
\*\* MOQ: Parts with MOQ, set-up costs may apply.

We exclusively sell to the trade and industry. Please note our minimum order quantities and the minimum order value per delivery. We would be pleased to send you an offer that is tailored to your needs should you require special colours, deviating dimensions, bioplastics, or larger order quantities.

## Caps for round tubes

Application: for round tubes  
Material: polyvinyl chloride  
Standard-Colour: black

A-PVC



Order No.	Article	Head Ø	Inside Ø	Length	Height	Colour	PU*	MOQ**
		D	D1	L	H			
052000300001000	A/PVC 30	34,0	29,8	31,1	25,0	black	900	900
052000320001000	A/PVC 32	36,0	31,8	30,8	25,5	black	800	800
052000340001000	A/PVC 34	38,0	33,8	31,5	24,7	black	700	700
052000350001000	A/PVC 35	39,0	35,0	31,2	25,0	black	700	700
052000380001000	A/PVC 38	42,5	37,9	33,0	24,0	black	550	550
052000400001000	A/PVC 40	44,5	39,9	32,0	26,5	black	500	500
052000420001000	A/PVC 42	46,0	41,8	33,0	24,0	black	500	500
052000430001000	A/PVC 43	47,0	42,8	32,3	26,2	black	500	500
052000450001000	A/PVC 45	49,0	44,4	33,7	25,4	black	450	450
052000480001000	A/PVC 48	52,5	47,9	32,8	24,8	black	400	400
052000490001000	A/PVC 49	53,0	48,4	33,8	27,4	black	400	400
052000540001000	A/PVC 54	57,5	53,1	34,3	25,5	black	350	350
052000590001000	A/PVC 59	64,0	58,8	37,0	26,8	black	250	250
052000630001000	A/PVC 63	68,0	63,0	37,5	27,5	black	225	225
052000690001000	A/PVC 69	73,5	68,5	37,5	27,5	black	200	200
052000750001000	A/PVC 75	80,0	74,6	40,5	28,0	black	150	150
052000900001000	A/PVC 90	96,0	89,6	44,0	31,0	black	100	100

Please note that the product illustrations are exemplary images that could deviate from the ordered/delivered products.

All of the dimensions are in mm should nothing to the contrary be stated.

\*PU = Packaging Unit, SW = Spanner opening, n.w. = not detachable, o. K. = excl. The head, o. B. = excl. The collar, m. R. = with the radius, MOQ = Minimum Order Quantity.

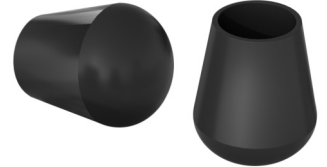
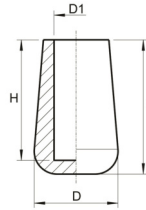
\*\* MOQ: Parts with MOQ, set-up costs may apply.

We exclusively sell to the trade and industry. Please note our minimum order quantities and the minimum order value per delivery. We would be pleased to send you an offer that is tailored to your needs should you require special colours, deviating dimensions, bioplastics, or larger order quantities.

## Caps for round tubes

Application: for round tubes  
Material: polyvinyl chloride  
Standard-Colour: black

AS-PVC



Order No.	Article	Head $\varnothing$	Inside $\varnothing$	Length	Height	Colour	PU*	MOQ**
		D	D1	L	H			
052100020001000	AS/PVC 2,8	8,3	2,8	12,4	9,5	black	1000	5000
052100030001000	AS/PVC 3,5	8,3	3,4	12,4	9,8	black	1000	5000
052100040001000	AS/PVC 4,0	9,2	3,9	13,0	9,8	black	1000	10000
052100050001000	AS/PVC 4,8	11,0	4,8	14,0	10,8	black	1000	5000
052100060001000	AS/PVC 5,8	11,1	5,7	14,3	12,2	black	1000	5000
052100080001000	AS/PVC 8,0	13,3	8,0	17,8	15,0	black	1000	1000

Please note that the product illustrations are exemplary images that could deviate from the ordered/delivered products.

All of the dimensions are in mm should nothing to the contrary be stated.

\*PU = Packaging Unit, SW = Spanner opening, n.w. = not detachable, o. K. = excl. The head, o. B. = excl. The collar, m. R. = with the radius, MOQ = Minimum Order Quantity.

\*\* MOQ: Parts with MOQ, set-up costs may apply.

We exclusively sell to the trade and industry. Please note our minimum order quantities and the minimum order value per delivery. We would be pleased to send you an offer that is tailored to your needs should you require special colours, deviating dimensions, bioplastics, or larger order quantities.

## Angled caps/feet for profiles

Application: angled feet  
Material: polyethylene  
Standard-Colour: black

UD



Please note that the product illustrations are exemplary images that could deviate from the ordered/delivered products.

All of the dimensions are in mm should nothing to the contrary be stated.

\*PU = Packaging Unit, SW = Spanner opening, n.w. = not detachable, o. K. = excl. The head, o. B. = excl. The collar, m. R. = with the radius, MOQ = Minimum Order Quantity.

\*\* MOQ: Parts with MOQ, set-up costs may apply.

We exclusively sell to the trade and industry. Please note our minimum order quantities and the minimum order value per delivery. We would be pleased to send you an offer that is tailored to your needs should you require special colours, deviating dimensions, bioplastics, or larger order quantities.

## Caps for elliptical tubes

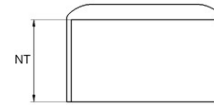
Application: for elliptical tubes

Additional Info:

Material: polyethylene

Standard-Colour: black, white

FOF



Order No.	Rohr außen- $\varnothing$	Nutztiefe	Colour	PU*	MOQ**
063041160001000	41x16	23,5	black	1500	1500
063041160003000	41x16	23,5	white	1500	15000

Please note that the product illustrations are exemplary images that could deviate from the ordered/delivered products.

All of the dimensions are in mm should nothing to the contrary be stated.

\*PU = Packaging Unit, SW = Spanner opening, n.w. = not detachable, o. K. = excl. The head, o. B. = excl. The collar, m. R. = with the radius, MOQ = Minimum Order Quantity.

\*\* MOQ: Parts with MOQ, set-up costs may apply.

We exclusively sell to the trade and industry. Please note our minimum order quantities and the minimum order value per delivery. We would be pleased to send you an offer that is tailored to your needs should you require special colours, deviating dimensions, bioplastics, or larger order quantities.

## Caps for oval tubes

Application: for oval tubes  
Material: polyethylene  
Standard-Colour: black, white



Order No.	Version	Tube size	Head	Height	Shaft	Plug-in depth	Colour	PU*	MOQ**
			D x B	H	d x b	T			
064030150001000	F	30x15	32,0x19,0	23,0	28,3x15,0	20,5	black	1000	-
064030150003000	F	30x15	32,0x19,0	23,0	28,3x15,0	20,5	white	1000	1000
064038200001000	G	38x20	41,0x23,3	24,0	37,5x19,0	19,0	black	1000	-
064038200003000	G	38x20	41,0x23,3	24,0	37,5x19,0	19,0	white	1000	2000

Please note that the product illustrations are exemplary images that could deviate from the ordered/delivered products.

All of the dimensions are in mm should nothing to the contrary be stated.

\*PU = Packaging Unit, SW = Spanner opening, n.w. = not detachable, o. K. = excl. The head, o. B. = excl. The collar, m. R. = with the radius, MOQ = Minimum Order Quantity.

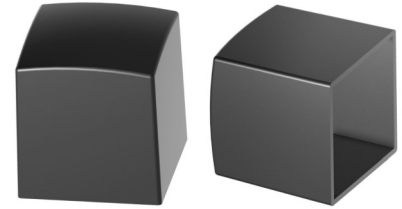
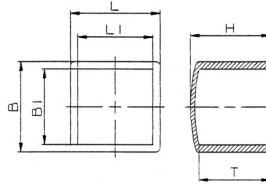
\*\* MOQ: Parts with MOQ, set-up costs may apply.

We exclusively sell to the trade and industry. Please note our minimum order quantities and the minimum order value per delivery. We would be pleased to send you an offer that is tailored to your needs should you require special colours, deviating dimensions, bioplastics, or larger order quantities.



## Caps for square and rectangular tubes

Application: for rectangular and square tubes  
Material: polyethylene  
Standard-Colour: black



Order No.	Tube size	Dimension	Total height	Plug-in depth	Inside dimension	Colour	PU*	MOQ**
		L x B	H	T	L1 x B1			
089020200001000	20x20	24,2 x 24,2	26,5	24,0	20,7 x 20,7	black	2000	-
089025250001000	25x25	29,8 x 29,8	26,9	23,6	25,1 x 25,1	black	2000	-
089030300001000	30x30	33,5 x 33,5	32,4	27,9	29,6 x 29,6	black	500	-
089040200001000	40x20	42,4 x 23,3	10,2	7,4	39,7 x 20,1	black	2500	-
089040400001000	40x40	43,5 x 43,5	31,7	28,0	39,7 x 39,7	black	500	-
089030150001000	30x15	32,1 x 17,9	24,4	22,3	29,3 x 14,6	black	2500	-
089050500001000	50x50	53,3 x 53,5	31,7	27,5	49,9 x 49,7	black	500	-

Please note that the product illustrations are exemplary images that could deviate from the ordered/delivered products.

All of the dimensions are in mm should nothing to the contrary be stated.

\*PU = Packaging Unit, SW = Spanner opening, n.w. = not detachable, o. K. = excl. The head, o. B. = excl. The collar, m. R. = with the radius, MOQ = Minimum Order Quantity.

\*\* MOQ: Parts with MOQ, set-up costs may apply.

We exclusively sell to the trade and industry. Please note our minimum order quantities and the minimum order value per delivery. We would be pleased to send you an offer that is tailored to your needs should you require special colours, deviating dimensions, bioplastics, or larger order quantities.