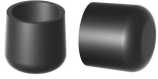


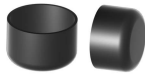
2

Caps

For round, rectangular, square, oval, elliptical tubes, and wires.

**A**

Page: 2

**A-PVC**

Page: 4

**AS-PVC**

Page: 5

**UD**

Page: 6

FOF

Page: 7

**FOK**

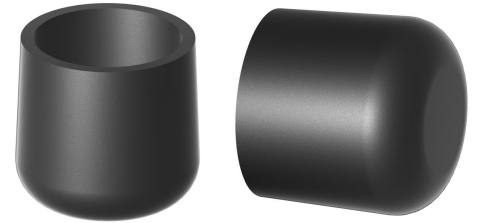
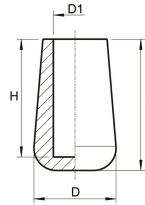
Page: 8

**U**

Page: 9

Caps for round tubes

Application: for round tubes
Material: Polyethylene
Standard-Colour: black, white



Order No.	Article	Head Ø	Inside Ø	Length	Height	Colour	PU*	MOQ**
		D	D1	L	H			
12130.00	A 3	5,5	2,9	8,8	7,9	black	10000	-
12130.02	A 3	5,5	2,9	8,8	7,9	white	10000	10000
12131.01	A 4	5,5	3,9	8,8	8,0	black	1000	25000
12131.04	A 4	5,5	3,9	8,8	8,0	white	1000	25000
12132.00	A 5	7,5	5,0	8,0	6,7	black	10000	-
12132.02	A 5	7,5	5,0	8,0	6,7	white	10000	10000
12133.01	A 6	7,5	5,9	12,0	9,5	black	1000	-
12133.03	A 6	7,5	5,9	12,0	9,5	white	20000	20000
12152.00	A 6,5	9,1	6,4	10,7	8,0	black	10000	10000
12152.01	A 6,5	9,1	6,4	10,7	8,0	white	10000	10000
12134.00	A 7	9,1	6,9	10,7	8,0	black	10000	-
12134.03	A 7	9,1	6,9	10,7	8,0	white	10000	10000
12135.00	A 8	11,5	7,9	13,0	11,4	black	10000	-
12135.02	A 8	11,5	7,9	13,0	11,4	white	10000	10000
12136.00	A 10	13,4	9,7	14,6	12,1	black	5000	-
12136.02	A 10	13,4	9,7	14,6	12,1	white	10000	10000
12137.00	A 11	15,5	10,9	16,0	13,2	black	10000	-
12137.01	A 11	15,5	10,9	16,0	13,2	white	10000	10000
12138.00	A 12	15,5	11,9	16,2	12,9	black	10000	-
12138.02	A 12	15,5	11,9	16,2	12,9	white	10000	10000
12139.00	A 13	16,5	12,9	18,0	14,0	black	10000	-
12139.02	A 13	16,5	12,9	18,0	14,0	white	10000	10000
12140.03	A 14	17,0	13,7	16,0	13,2	white	5000	5000
12140.00	A 14	17,0	13,7	16,0	13,2	black	5000	-
12141.03	A 16	19,7	15,9	21,2	17,0	white	5000	5000
12141.00	A 16	19,7	15,9	21,2	17,0	black	5000	-
12151.00	A 18	22,0	17,5	26,1	24,4	black	2500	2500
12142.00	A 19	22,3	18,8	23,2	9,2	black	5000	-
12142.03	A 19	22,3	18,8	23,2	9,2	white	5000	30000
12143.03	A 20	24,2	19,8	23,3	18,9	white	5000	-
12143.00	A 20	24,2	19,8	23,3	18,9	black	5000	-

Please note that the product illustrations are exemplary images that could deviate from the ordered/delivered products.

All of the dimensions are in mm should nothing to the contrary be stated.

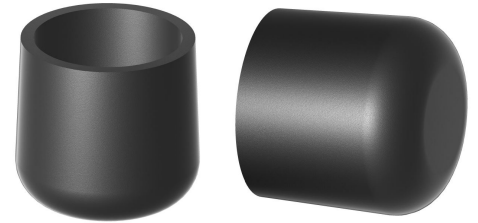
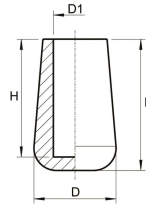
*PU = Packaging Unit, SW = Spanner opening, n.w. = not detachable, o. K. = excl. The head, o. B. = excl. The collar, m. R. = with the radius, MOQ = Minimum Order Quantity.

** MOQ: Parts with MOQ, set-up costs may apply.

We exclusively sell to the trade and industry. Please note our minimum order quantities and the minimum order value per delivery. We would be pleased to send you an offer that is tailored to your needs should you require special colours, deviating dimensions, bioplastics, or larger order quantities.

Caps for round tubes

Application: for round tubes
Material: Polyethylene
Standard-Colour: black, white



Order No.	Article	Head Ø	Inside Ø	Length	Height	Colour	PU*	MOQ**
		D	D1	L	H			
12144.00	A 21	26,4	21,0	27,1	21,4	black	3000	-
12144.01	A 21	26,4	21,0	27,1	21,4	white	3000	3000
12145.00	A 22	25,4	21,6	24,1	20,1	black	3000	-
12146.00	A 24	28,4	23,7	27,5	21,1	black	3000	-
12145.03	A 22	25,4	21,6	24,1	20,1	white	3000	6000
12147.03	A 25	28,1	24,9	30,6	24,8	white	2000	4000
12147.00	A 25	28,1	24,9	30,6	24,8	black	2000	-
12148.00	A 27	32,8	25,8-26,5	30,6	25,4	black	1000	-
12148.02	A 27	32,8	25,8-26,5	30,6	25,4	white	1000	1000
12149.00	A 28	32,8	27,5	28,8	23,9	black	1000	-
12149.02	A 28	32,8	27,5	28,8	23,9	white	1000	3000
12150.00	A 30	33,8	29,5	29,2	24,2	black	1000	-
12150.01	A 30	33,8	29,5	29,2	24,2	white	1000	3000

Please note that the product illustrations are exemplary images that could deviate from the ordered/delivered products.

All of the dimensions are in mm should nothing to the contrary be stated.

*PU = Packaging Unit, SW = Spanner opening, n.w. = not detachable, o. K. = excl. The head, o. B. = excl. The collar, m. R. = with the radius, MOQ = Minimum Order Quantity.

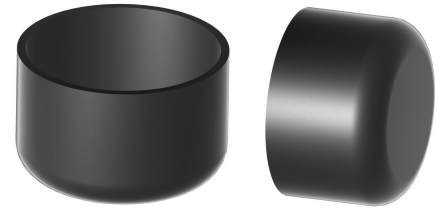
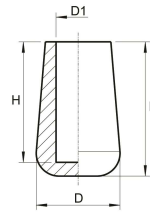
** MOQ: Parts with MOQ, set-up costs may apply.

We exclusively sell to the trade and industry. Please note our minimum order quantities and the minimum order value per delivery. We would be pleased to send you an offer that is tailored to your needs should you require special colours, deviating dimensions, bioplastics, or larger order quantities.

Caps for round tubes

Application: for round tubes
Material: polyvinyl chloride
Standard-Colour: black

A-PVC



Order No.	Article	Head Ø	Inside Ø	Length	Height	Colour	PU*	MOQ**
		D	D1	L	H			
12193.00	A/PVC 30	34,0	29,8	31,1	25,0	black	900	900
12194.00	A/PVC 32	36,0	31,8	30,8	25,5	black	800	800
12195.00	A/PVC 34	38,0	33,8	31,5	24,7	black	700	700
12196.00	A/PVC 35	39,0	35,0	31,2	25,0	black	700	700
12197.00	A/PVC 38	42,5	37,9	33,0	24,0	black	550	550
12198.00	A/PVC 40	44,5	39,9	32,0	26,5	black	500	500
12199.00	A/PVC 42	46,0	41,8	33,0	24,0	black	500	500
12200.00	A/PVC 43	47,0	42,8	32,3	26,2	black	500	500
12201.00	A/PVC 45	49,0	44,4	33,7	25,4	black	450	450
12202.00	A/PVC 48	52,5	47,9	32,8	24,8	black	400	400
12203.00	A/PVC 49	53,0	48,4	33,8	27,4	black	400	400
12204.00	A/PVC 54	57,5	53,1	34,3	25,5	black	350	350
12205.00	A/PVC 59	64,0	58,8	37,0	26,8	black	250	250
12206.00	A/PVC 63	68,0	63,0	37,5	27,5	black	225	225
12207.00	A/PVC 69	73,5	68,5	37,5	27,5	black	200	200
12208.00	A/PVC 75	80,0	74,6	40,5	28,0	black	150	150
12209.00	A/PVC 90	96,0	89,6	44,0	31,0	black	100	100

Please note that the product illustrations are exemplary images that could deviate from the ordered/delivered products.

All of the dimensions are in mm should nothing to the contrary be stated.

*PU = Packaging Unit, SW = Spanner opening, n.w. = not detachable, o. K. = excl. The head, o. B. = excl. The collar, m. R. = with the radius, MOQ = Minimum Order Quantity.

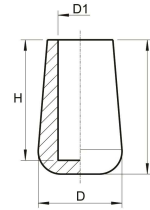
** MOQ: Parts with MOQ, set-up costs may apply.

We exclusively sell to the trade and industry. Please note our minimum order quantities and the minimum order value per delivery. We would be pleased to send you an offer that is tailored to your needs should you require special colours, deviating dimensions, bioplastics, or larger order quantities.

Caps for round tubes

Application: for round tubes
Material: polyvinyl chloride
Standard-Colour: black

AS-PVC



Order No.	Article	Head \varnothing	Inside \varnothing	Length	Height	Colour	PU*	MOQ**
		D	D1	L	H			
12210.00	AS/PVC 2,8	8,3	2,8	12,4	9,5	black	1000	5000
12211.00	AS/PVC 3,5	8,3	3,4	12,4	9,8	black	1000	5000
12212.00	AS/PVC 4,0	9,2	3,9	13,0	9,8	black	1000	10000
12213.00	AS/PVC 4,8	11,0	4,8	14,0	10,8	black	1000	5000
12214.00	AS/PVC 5,8	11,1	5,7	14,3	12,2	black	1000	5000
12215.00	AS/PVC 8,0	13,3	8,0	17,8	15,0	black	1000	1000

Please note that the product illustrations are exemplary images that could deviate from the ordered/delivered products.

All of the dimensions are in mm should nothing to the contrary be stated.

*PU = Packaging Unit, SW = Spanner opening, n.w. = not detachable, o. K. = excl. The head, o. B. = excl. The collar, m. R. = with the radius, MOQ = Minimum Order Quantity.

** MOQ: Parts with MOQ, set-up costs may apply.

We exclusively sell to the trade and industry. Please note our minimum order quantities and the minimum order value per delivery. We would be pleased to send you an offer that is tailored to your needs should you require special colours, deviating dimensions, bioplastics, or larger order quantities.

Angled caps/feet for profiles

Application: angled feet
Material: polyethylene
Standard-Colour: black

UD



Please note that the product illustrations are exemplary images that could deviate from the ordered/delivered products.

All of the dimensions are in mm should nothing to the contrary be stated.

*PU = Packaging Unit, SW = Spanner opening, n.w. = not detachable, o. K. = excl. The head, o. B. = excl. The collar, m. R. = with the radius, MOQ = Minimum Order Quantity.

** MOQ: Parts with MOQ, set-up costs may apply.

We exclusively sell to the trade and industry. Please note our minimum order quantities and the minimum order value per delivery. We would be pleased to send you an offer that is tailored to your needs should you require special colours, deviating dimensions, bioplastics, or larger order quantities.

Caps for elliptical tubes

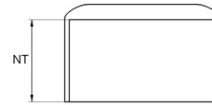
Application: for elliptical tubes

Additional Info:

Material: polyethylene

Standard-Colour: black, white

FOF



Order No.	Rohraußen-Ø	Nutztiefe	Colour	PU*	MOQ**
12781.00	41x16	23,5	black	1500	1500
12781.01	41x16	23,5	white	1500	15000

Please note that the product illustrations are exemplary images that could deviate from the ordered/delivered products.

All of the dimensions are in mm should nothing to the contrary be stated.

*PU = Packaging Unit, SW = Spanner opening, n.w. = not detachable, o. K. = excl. The head, o. B. = excl. The collar, m. R. = with the radius, MOQ = Minimum Order Quantity.

** MOQ: Parts with MOQ, set-up costs may apply.

We exclusively sell to the trade and industry. Please note our minimum order quantities and the minimum order value per delivery. We would be pleased to send you an offer that is tailored to your needs should you require special colours, deviating dimensions, bioplastics, or larger order quantities.

Caps for oval tubes

Application: for oval tubes
Material: polyethylene
Standard-Colour: black, white



Order No.	Version	Tube size	Head	Height	Shaft	Plug-in depth	Colour	PU*	MOQ**
			D x B	H	d x b	T			
12799.00	F	30x15	32,0x19,0	23,0	28,3x15,0	20,5	black	1000	-
12799.01	F	30x15	32,0x19,0	23,0	28,3x15,0	20,5	white	1000	1000
12801.00	G	38x20	41,0x23,3	24,0	37,5x19,0	19,0	black	1000	-
12801.01	G	38x20	41,0x23,3	24,0	37,5x19,0	19,0	white	1000	2000

Please note that the product illustrations are exemplary images that could deviate from the ordered/delivered products.

All of the dimensions are in mm should nothing to the contrary be stated.

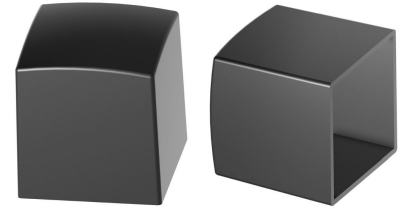
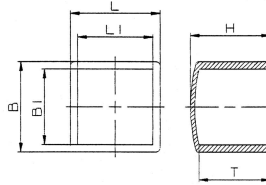
*PU = Packaging Unit, SW = Spanner opening, n.w. = not detachable, o. K. = excl. The head, o. B. = excl. The collar, m. R. = with the radius, MOQ = Minimum Order Quantity.

** MOQ: Parts with MOQ, set-up costs may apply.

We exclusively sell to the trade and industry. Please note our minimum order quantities and the minimum order value per delivery. We would be pleased to send you an offer that is tailored to your needs should you require special colours, deviating dimensions, bioplastics, or larger order quantities.

Caps for square and rectangular tubes

Application: for rectangular and square tubes
Material: polyethylene
Standard-Colour: black



Order No.	Tube size	Dimension	Total height	Plug-in depth	Inside dimension	Colour	PU*	MOQ**
		L x B	H	T	L1 x B1			
13616.00	20x20	24,2 x 24,2	26,5	24,0	20,7 x 20,7	black	2000	-
13617.00	25x25	29,8 x 29,8	26,9	23,6	25,1 x 25,1	black	2000	-
13619.00	30x30	33,5 x 33,5	32,4	27,9	29,6 x 29,6	black	500	-
13620.00	40x20	42,4 x 23,3	10,2	7,4	39,7 x 20,1	black	2500	-
13621.00	40x40	43,5 x 43,5	31,7	28,0	39,7 x 39,7	black	500	-
13618.00	30x15	32,1 x 17,9	24,4	22,3	29,3 x 14,6	black	2500	-
13622.00	50x50	53,3 x 53,5	31,7	27,5	49,9 x 49,7	black	500	-

Please note that the product illustrations are exemplary images that could deviate from the ordered/delivered products.

All of the dimensions are in mm should nothing to the contrary be stated.

*PU = Packaging Unit, SW = Spanner opening, n.w. = not detachable, o. K. = excl. The head, o. B. = excl. The collar, m. R. = with the radius, MOQ = Minimum Order Quantity.

** MOQ: Parts with MOQ, set-up costs may apply.

We exclusively sell to the trade and industry. Please note our minimum order quantities and the minimum order value per delivery. We would be pleased to send you an offer that is tailored to your needs should you require special colours, deviating dimensions, bioplastics, or larger order quantities.