

10

Connectors and fasteners

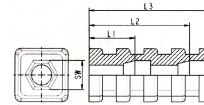
For rectangular, square, and round tubes. Plug-in connectors for tubes.

 JE 1 Page: 2	 JRE Page: 3	 VA1 Page: 5	 VA2 Page: 6	 VB1 Page: 7	 VB2 Page: 8	 VC1 Page: 9	 VC2 Page: 10
 VG1 Page: 11	 VG2 Page: 12	 VG3 Page: 13	 VGQ Page: 14	 VGR Page: 15	 VK1 Page: 16	 VK2 Page: 17	 VS1 Page: 18
 VS2 Page: 19	 VT1 Page: 20	 VT2 Page: 21	 VW1 Page: 22	 VW2 Page: 23			

Expander connectors for square tubes

JE 1

Application: for square tubes
Material: polyamide
Standard-Colour: black



Order No.	Tube dimension	With / for nut	SW nut	Nut mounted on position	Colour	PU*	MOQ**
17724.00	18x18x1,5	M8	13	ohne/without	black	2000	-
17725.00	20x20x1,5	M6	10	ohne/without	black	1900	-
17726.00	20x20x1,5	M8	13	ohne/without	black	2000	-
17727.00	20x20x2	M8	13	ohne/without	black	2000	-
17728.00	22x22x1,5	M6	10	ohne/without	black	1500	-
17729.00	22x22x1,5	M8	13	ohne/without	black	1750	-
17738.00	25x25x1,5	M8	13	L1	black	700	-
17730.00	25x25x1,5	M10	17	ohne/without	black	1250	-
17731.00	25x25x2	M8	13	ohne/without	black	1250	-
17732.00	30x30x1,5	M10	17	ohne/without	black	850	-
17734.00	30x30x2	M8	13	ohne/without	black	1000	-
17733.00	30x30x2	M10	17	ohne/without	black	900	-
17735.00	35x35x2	M10	17	ohne/without	black	600	-
17736.00	40x40x2	M10	17	ohne/without	black	450	-
17737.00	45x45x1,5	M10	17	ohne/without	black	350	-

Please note that the product illustrations are exemplary images that could deviate from the ordered/delivered products.

All of the dimensions are in mm should nothing to the contrary be stated.

*PU = Packaging Unit, SW = Spanner opening, n.w. = not detachable, o. K. = excl. The head, o. B. = excl. The collar, m. R. = with the radius, MOQ = Minimum Order Quantity.

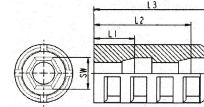
** MOQ: Parts with MOQ, set-up costs may apply.

We exclusively sell to the trade and industry. Please note our minimum order quantities and the minimum order value per delivery. We would be pleased to send you an offer that is tailored to your needs should you require special colours, deviating dimensions, bioplastics, or larger order quantities.

Expander connectors for round tubes

JRE

Application: for round tubes
 Additional Info: Attention! Please consider that not all glides have the same clamping ribs form
 Material: polyamide
 Standard-Colour: black



Order No.	Tube outside Ø	With/for nut	SW nut	Nut mounted on position	Colour	PU*	MOQ**
17664.00	16x1	M6	10	ohne/without	black	3500	-
17665.00	19x1,5	M6	10	ohne/without	black	3000	-
17666.00	20x1	M8	13	ohne/without	black	2000	-
17667.00	20x1,5	M6	10	ohne/without	black	2500	-
17698.00	20x1,5	M6	10	L1	black	1000	-
17668.00	20x1,5	M8	13	ohne/without	black	2500	-
17669.00	20x2	M8	13	ohne/without	black	3000	-
17670.00	22x1	M8	13	ohne/without	black	2000	-
17671.00	22x1,5	M6	10	ohne/without	black	2000	-
17672.00	22x1,5	M8	13	ohne/without	black	2000	4000
17699.00	22x1,5	M8	13	L1	black	1000	3000
17673.00	25x1,5	M6	10	ohne/without	black	1500	-
17700.00	25x1,5	M6	10	L1	black	750	-
17674.00	25x1,5	M8	13	ohne/without	black	1500	-
17701.00	25x1,5	M8	13	L1	black	750	-
17675.00	28x1,5	M6	10	ohne/without	#nv	1100	-
17676.00	28x1,5	M8	13	ohne/without	black	1250	-
17677.00	28x2	M8	13	ohne/without	black	1400	-
17679.00	30x1,5	M8	13	ohne/without	black	1100	-
17678.00	30x1,5	M8	17	ohne/without	black	1250	-
17681.00	30x2	M8	13	ohne/without	black	1250	-
17680.00	30x2	M10	17	ohne/without	black	1250	-
17683.00	32x1,2	M6	10	ohne/without	black	800	-
17684.00	32x1,5	M10	17	ohne/without	black	1000	-
17702.00	32x1,5	M10	17	L1	black	500	-
17682.00	32x2	M6	10	ohne/without	black	850	-
17685.00	32x2	M10	17	ohne/without	black	1000	-
17686.00	32x2,5	M10	17	ohne/without	black	1000	-
17688.00	35x1,5	M6	10	ohne/without	black	700	-
17687.00	35x1,5	M10	17	ohne/without	black	750	-
17689.00	35x2	M10	17	ohne/without	black	900	-

Please note that the product illustrations are exemplary images that could deviate from the ordered/delivered products.

All of the dimensions are in mm should nothing to the contrary be stated.

*PU = Packaging Unit, SW = Spanner opening, n.w. = not detachable, o. K. = excl. The head, o. B. = excl. The collar, m. R. = with the radius, MOQ = Minimum Order Quantity.

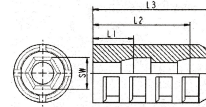
** MOQ: Parts with MOQ, set-up costs may apply.

We exclusively sell to the trade and industry. Please note our minimum order quantities and the minimum order value per delivery. We would be pleased to send you an offer that is tailored to your needs should you require special colours, deviating dimensions, bioplastics, or larger order quantities.

Expander connectors for round tubes

Application: for round tubes
Material: polyamide
Standard-Colour: black

JRE



Order No.	Tube outside Ø	With/for nut	SW nut	Nut mounted on position	Colour	PU*	MOQ**
17690.00	35x2,5	M6	10	ohne/without	black	900	-
17691.00	40x2	M10	17	ohne/without	black	500	-
17704.00	40x2	M10	17	L1	black	300	-
17692.00	40x2,5	M6	10	ohne/without	black	550	-
17693.00	42x1,5	M10	17	ohne/without	black	550	-
17694.00	42x2	M10	17	ohne/without	black	550	-
17695.00	45x2	M10	17	ohne/without	black	450	-
17696.00	60x1,6	M10	17	ohne/without	black	250	-
17697.00	60x2	M8	13	ohne/without	black	250	-

Please note that the product illustrations are exemplary images that could deviate from the ordered/delivered products.

All of the dimensions are in mm should nothing to the contrary be stated.

*PU = Packaging Unit, SW = Spanner opening, n.w. = not detachable, o. K. = excl. The head, o. B. = excl. The collar, m. R. = with the radius, MOQ = Minimum Order Quantity.

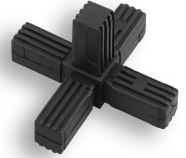
** MOQ: Parts with MOQ, set-up costs may apply.

We exclusively sell to the trade and industry. Please note our minimum order quantities and the minimum order value per delivery. We would be pleased to send you an offer that is tailored to your needs should you require special colours, deviating dimensions, bioplastics, or larger order quantities.

Plug-in connectors for square tubes, cross with outlet

VA1

Application: for square tubes
 Additional Info: for square tubes, cross with outlet, half-shells suitable for arming with steel cores
 Material: polyamide
 Standard-Colour: black



Order No.	For tube	Pin length	Colour	PU*	MOQ**
17784.00	20 x 20 x 1,5	36	black	50	100
17786.00	25 x 25 x 1,5	54	black	50	100
17787.00	30 x 30 x 2,0	47	black	50	100

Please note that the product illustrations are exemplary images that could deviate from the ordered/delivered products.

All of the dimensions are in mm should nothing to the contrary be stated.

*PU = Packaging Unit, SW = Spanner opening, n.w. = not detachable, o. K. = excl. The head, o. B. = excl. The collar, m. R. = with the radius, MOQ = Minimum Order Quantity.

** MOQ: Parts with MOQ, set-up costs may apply.

We exclusively sell to the trade and industry. Please note our minimum order quantities and the minimum order value per delivery. We would be pleased to send you an offer that is tailored to your needs should you require special colours, deviating dimensions, bioplastics, or larger order quantities.

Plug-in connectors for square tubes, cross with outlet

VA2

Application: for square tubes
 Additional Info: for square tubes, cross with outlet, one-piece
 Material: PA GF
 Standard-Colour: grey similar to RAL 7035



Order No.	For tube	Pin length	Colour	PU*	MOQ**
17785.00	20 x 20 x 1,5	30	grey	200	200

Please note that the product illustrations are exemplary images that could deviate from the ordered/delivered products.

All of the dimensions are in mm should nothing to the contrary be stated.

*PU = Packaging Unit, SW = Spanner opening, n.w. = not detachable, o. K. = excl. The head, o. B. = excl. The collar, m. R. = with the radius, MOQ = Minimum Order Quantity.

** MOQ: Parts with MOQ, set-up costs may apply.

We exclusively sell to the trade and industry. Please note our minimum order quantities and the minimum order value per delivery. We would be pleased to send you an offer that is tailored to your needs should you require special colours, deviating dimensions, bioplastics, or larger order quantities.

Plug-in connectors for square tubes - angle with outlet

VB1

Application: for square tubes
 Additional Info: for square tubes, angle with outlet, half-shells suitable for arming with steel cores
 Material: polyamide
 Standard-Colour: black



Order No.	For tube	Pin length	Colour	PU*	MOQ**
17764.00	20 x 20 x 1,5	36	black	300	300
17767.00	25 x 25 x 1,5	52	black	100	100
17772.00	30 x 30 x 2,0	47	black	100	100

Please note that the product illustrations are exemplary images that could deviate from the ordered/delivered products.

All of the dimensions are in mm should nothing to the contrary be stated.

*PU = Packaging Unit, SW = Spanner opening, n.w. = not detachable, o. K. = excl. The head, o. B. = excl. The collar, m. R. = with the radius, MOQ = Minimum Order Quantity.

** MOQ: Parts with MOQ, set-up costs may apply.

We exclusively sell to the trade and industry. Please note our minimum order quantities and the minimum order value per delivery. We would be pleased to send you an offer that is tailored to your needs should you require special colours, deviating dimensions, bioplastics, or larger order quantities.

Plug-in connectors for square tubes - angle with outlet

VB2

Application: for square tubes
 Additional Info: for square tubes, angle with outlet, one-piece
 Material: PA GF
 Standard-Colour: grey similar to RAL 7035



Order No.	For tube	Pin length	Colour	PU*	MOQ**
17766.00	20 x 20 x 1,5	30	grey	350	350
17771.00	25 x 25 x 2,0	40	grey	170	170

Please note that the product illustrations are exemplary images that could deviate from the ordered/delivered products.

All of the dimensions are in mm should nothing to the contrary be stated.

*PU = Packaging Unit, SW = Spanner opening, n.w. = not detachable, o. K. = excl. The head, o. B. = excl. The collar, m. R. = with the radius, MOQ = Minimum Order Quantity.

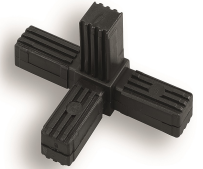
** MOQ: Parts with MOQ, set-up costs may apply.

We exclusively sell to the trade and industry. Please note our minimum order quantities and the minimum order value per delivery. We would be pleased to send you an offer that is tailored to your needs should you require special colours, deviating dimensions, bioplastics, or larger order quantities.

Plug-in connectors for square tubes, T-piece with outlet

VC1

Application: for square tubes
 Additional Info: for square tubes, T-pieces with outlet, half-shells suitable for arming with steel cores
 Material: polyamide
 Standard-Colour: black




Order No.	For tube	Pin length	Colour	PU*	MOQ**
17774.00	20 x 20 x 1,5	36	black	200	200
17777.00	25 x 25 x 1,5	52	black	75	75
17782.00	30 x 30 x 2,0	47	black	75	75

Please note that the product illustrations are exemplary images that could deviate from the ordered/delivered products.

All of the dimensions are in mm should nothing to the contrary be stated.

*PU = Packaging Unit, SW = Spanner opening, n.w. = not detachable, o. K. = excl. The head, o. B. = excl. The collar, m. R. = with the radius, MOQ = Minimum Order Quantity.

** MOQ: Parts with MOQ, set-up costs may apply.

 We exclusively sell to the trade and industry. Please note our minimum order quantities and the minimum order value per delivery. We would be pleased to send you an offer that is tailored to your needs should you require special colours, deviating dimensions, bioplastics, or larger order quantities.

Plug-in connectors for square tubes, T-piece with outlet

VC2

Application: for square tubes
 Additional Info: for square tubes, T-pieces with outlet, one-piece
 Material: PA GF
 Standard-Colour: grey similar to RAL 7035




Order No.	For tube	Pin length	Colour	PU*	MOQ**
17776.00	20 x 20 x 1,5	30	grey	250	250
17781.00	25 x 25 x 2,0	40	grey	120	120

Please note that the product illustrations are exemplary images that could deviate from the ordered/delivered products.

All of the dimensions are in mm should nothing to the contrary be stated.

*PU = Packaging Unit, SW = Spanner opening, n.w. = not detachable, o. K. = excl. The head, o. B. = excl. The collar, m. R. = with the radius, MOQ = Minimum Order Quantity.

** MOQ: Parts with MOQ, set-up costs may apply.

 We exclusively sell to the trade and industry. Please note our minimum order quantities and the minimum order value per delivery. We would be pleased to send you an offer that is tailored to your needs should you require special colours, deviating dimensions, bioplastics, or larger order quantities.

Plug-in connectors for square tubes, joint

VG1

Application: for square tubes
 Additional Info: for square tubes, link
 Material: polyamide
 Standard-Colour: black



Order No.	For tube	Pin length	Note	Angle	Colour	PU*	MOQ**
17740.00	20 x 20 x 1,5	35	-	0°-220°	black	200	200
17745.00	25 x 25 x 1,5	38	-	45°-195°	black	150	150
17746.00	25 x 25 x 1,5	39	-	0°-190°	black	100	100
17747.00	25 x 25 x 1,5	50	o. K.	60°-300°	black	200	200
17752.00	30 x 30 x 2,0	41	-	45°-200°	black	100	100

Please note that the product illustrations are exemplary images that could deviate from the ordered/delivered products.

All of the dimensions are in mm should nothing to the contrary be stated.

*PU = Packaging Unit, SW = Spanner opening, n.w. = not detachable, o. K. = excl. The head, o. B. = excl. The collar, m. R. = with the radius, MOQ = Minimum Order Quantity.

** MOQ: Parts with MOQ, set-up costs may apply.

We exclusively sell to the trade and industry. Please note our minimum order quantities and the minimum order value per delivery. We would be pleased to send you an offer that is tailored to your needs should you require special colours, deviating dimensions, bioplastics, or larger order quantities.

Plug-in connectors with link for square tubes

VG2

Application: for square tubes
 Additional Info: for square tubes, link, one-piece
 Material: Polyamide
 Standard-Colour: black



	for tube	Pin length	Note	Angel	Colour	PU*	MOQ**
17765.00	20 x 20 x 1,5	42	-	0°-190°	black	100	100
17768.00	25 x 25 x 1,5	43	-	45°-195°	black	100	100
17769.00	25 x 25 x 1,5	43	-	0°-190°	black	75	75
17770.00	25 x 25 x 1,5	50	o. K.	60°-300°	black	100	100
17773.00	30 x 30 x 2,0	41	-	45°-200°	black	100	100

Please note that the product illustrations are exemplary images that could deviate from the ordered/delivered products.

All of the dimensions are in mm should nothing to the contrary be stated.

*PU = Packaging Unit, SW = Spanner opening, n.w. = not detachable, o. K. = excl. The head, o. B. = excl. The collar, m. R. = with the radius, MOQ = Minimum Order Quantity.

** MOQ: Parts with MOQ, set-up costs may apply.

We exclusively sell to the trade and industry. Please note our minimum order quantities and the minimum order value per delivery. We would be pleased to send you an offer that is tailored to your needs should you require special colours, deviating dimensions, bioplastics, or larger order quantities.

Plug-in connectors with link for square tubes - joints with two outlets

VG3

Application: for square tubes
Additional Info: for square tubes, link with two outlets
Material: polyamide
Standard-Colour: black



Order No.	For tube	Pin length	Note	Angle	Colour	PU*	MOQ**
17775.00	20 x 20 x 1,5	42	-	0°-190°	black	100	100
17778.00	25 x 25 x 1,5	43	-	45°-195°	black	100	100
17779.00	25 x 25 x 1,5	43	-	0°-190°	black	50	50
17780.00	25 x 25 x 1,5	50	o. K.	60°-300°	black	25	100
17783.00	30 x 30 x 2,0	41	-	45°-200°	black	50	50

Please note that the product illustrations are exemplary images that could deviate from the ordered/delivered products.

All of the dimensions are in mm should nothing to the contrary be stated.

*PU = Packaging Unit, SW = Spanner opening, n.w. = not detachable, o. K. = excl. The head, o. B. = excl. The collar, m. R. = with the radius, MOQ = Minimum Order Quantity.

** MOQ: Parts with MOQ, set-up costs may apply.

We exclusively sell to the trade and industry. Please note our minimum order quantities and the minimum order value per delivery. We would be pleased to send you an offer that is tailored to your needs should you require special colours, deviating dimensions, bioplastics, or larger order quantities.

Plug-in connectors for square tubes, straight

VGQ

Application: for square tubes
 Additional Info: for square tubes, straight, half-shells
 suitable for arming with steel cores
 Material: polyamide
 Standard-Colour: black



Order No.	For tube	Pin length mm	Flange	Note	Colour	PU*	MOQ**
17718.00	20 x 20 x 1,5	45	5,0		black	900	900
17719.00	20 x 20 x 2,0	44	5,0		black	1000	1000
17720.00	25 x 25 x 1,5	35	5,0		black	700	700
17721.00	25 x 25 x 2,0	35	5,0		black	750	750
17723.00	30 x 30 x 1,5	61	-	o. B.	black	300	900
17722.00	30 x 30 x 2,0	60	-	o. B.	black	300	900
17722.01	30 x 30 x 2,0	50	5,0		black	350	350

Please note that the product illustrations are exemplary images that could deviate from the ordered/delivered products.

All of the dimensions are in mm should nothing to the contrary be stated.

*PU = Packaging Unit, SW = Spanner opening, n.w. = not detachable, o. K. = excl. The head, o. B. = excl. The collar, m. R. = with the radius, MOQ = Minimum Order Quantity.

** MOQ: Parts with MOQ, set-up costs may apply.

We exclusively sell to the trade and industry. Please note our minimum order quantities and the minimum order value per delivery.
 We would be pleased to send you an offer that is tailored to your needs should you require special colours, deviating dimensions, bioplastics, or larger order quantities.

Plug-in connectors for round tubes, straight

VGR

Application: for round tubes
 Additional Info: for round tubes, straight, half-shells
 suitable for arming with steel cores
 Material: PA
 Standard-Colour: black



Order No.	For tube Ø	Pin length	Flange	Note	Colour	PU*	MOQ**
17706.00	19 x 1,0	43	5,0		black	1000	-
17707.00	20 x 1,5	36	5,0		black	1200	-
17709.00	22 x 1,0	38	2,0		black	1000	-
17708.00	22 x 1,5	40	5,0		black	1000	-
17710.00	22 x 2,0	42	5,0		black	1000	-
17711.00	25 x 1,5	37	5,0		black	800	-
17712.00	28 x 1,5	49	5,0		black	500	-
17713.00	28 x 2,0	50	5,0		black	500	-
17714.00	30 x 1,5	49	5,0		black	400	-
17715.00	30 x 2,0	49	5,0		black	350	-
17716.00	32 x 1,5	50	5,0		black	350	-
17717.00	32 x 2,0	50	5,0		black	400	-

Please note that the product illustrations are exemplary images that could deviate from the ordered/delivered products.

All of the dimensions are in mm should nothing to the contrary be stated.

*PU = Packaging Unit, SW = Spanner opening, n.w. = not detachable, o. K. = excl. The head, o. B. = excl. The collar, m. R. = with the radius, MOQ = Minimum Order Quantity.

** MOQ: Parts with MOQ, set-up costs may apply.

We exclusively sell to the trade and industry. Please note our minimum order quantities and the minimum order value per delivery. We would be pleased to send you an offer that is tailored to your needs should you require special colours, deviating dimensions, bioplastics, or larger order quantities.

Plug-in connectors for square tubes, cross

VK1

Application: for square tubes
 Additional Info: for square tubes, cross, half-shells
 suitable for arming with steel cores
 Material: polyamide
 Standard-Colour: black



Order No.	For tube	Pin length	Colour	PU*	MOQ**
17759.00	20 x 20 x 1,5	36	black	350	350
17761.00	25 x 25 x 1,5	54	black	75	75
17763.00	30 x 30 x 2,0	47	black	100	100

Please note that the product illustrations are exemplary images that could deviate from the ordered/delivered products.

All of the dimensions are in mm should nothing to the contrary be stated.

*PU = Packaging Unit, SW = Spanner opening, n.w. = not detachable, o. K. = excl. The head, o. B. = excl. The collar, m. R. = with the radius, MOQ = Minimum Order Quantity.

** MOQ: Parts with MOQ, set-up costs may apply.

We exclusively sell to the trade and industry. Please note our minimum order quantities and the minimum order value per delivery.
 We would be pleased to send you an offer that is tailored to your needs should you require special colours, deviating dimensions, bioplastics, or larger order quantities.

Plug-in connectors for square tubes, cross

VK2

Application: for square tubes
 Additional Info: for square tubes, cross, one-piece
 Material: PA GF
 Standard-Colour: grey similar to RAL 7035




Order No.	For tube	Pin length	Colour	PU*	MOQ**
17760.00	20 x 20 x 1,5	30	grey	250	250
17762.00	25 x 25 x 2,0	40	grey	250	250

Please note that the product illustrations are exemplary images that could deviate from the ordered/delivered products.

All of the dimensions are in mm should nothing to the contrary be stated.

*PU = Packaging Unit, SW = Spanner opening, n.w. = not detachable, o. K. = excl. The head, o. B. = excl. The collar, m. R. = with the radius, MOQ = Minimum Order Quantity.

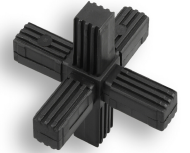
** MOQ: Parts with MOQ, set-up costs may apply.

 We exclusively sell to the trade and industry. Please note our minimum order quantities and the minimum order value per delivery. We would be pleased to send you an offer that is tailored to your needs should you require special colours, deviating dimensions, bioplastics, or larger order quantities.

Plug-in connectors for square tubes, star

VS1

Application: for square tubes
 Additional Info: for square tubes, stars, half-shells
 suitable for arming with steel cores
 Material: polyamide
 Standard-Colour: black




Order No.	For tube	Pin length	Colour	PU*	MOQ**
17788.00	20 x 20 x 1,5	36	black	200	200
17790.00	25 x 25 x 1,5	54	black	50	100
17791.00	30 x 30 x 2,0	47	black	50	100

Please note that the product illustrations are exemplary images that could deviate from the ordered/delivered products.

All of the dimensions are in mm should nothing to the contrary be stated.

*PU = Packaging Unit, SW = Spanner opening, n.w. = not detachable, o. K. = excl. The head, o. B. = excl. The collar, m. R. = with the radius, MOQ = Minimum Order Quantity.

** MOQ: Parts with MOQ, set-up costs may apply.

 We exclusively sell to the trade and industry. Please note our minimum order quantities and the minimum order value per delivery.
 We would be pleased to send you an offer that is tailored to your needs should you require special colours, deviating dimensions, bioplastics, or larger order quantities.

Plug-in connectors for square tubes, star

VS2

Application: for square tubes
 Additional Info: for square tubes, stars, one-piece
 Material: PA GF
 Standard-Colour: grey similar to RAL 7035



Order No.	For tube	Pin length	Colour	PU*	MOQ**
17789.00	20 x 20 x 1,5	30	grey	150	150

Please note that the product illustrations are exemplary images that could deviate from the ordered/delivered products.

All of the dimensions are in mm should nothing to the contrary be stated.

*PU = Packaging Unit, SW = Spanner opening, n.w. = not detachable, o. K. = excl. The head, o. B. = excl. The collar, m. R. = with the radius, MOQ = Minimum Order Quantity.

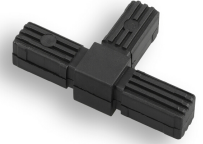
** MOQ: Parts with MOQ, set-up costs may apply.

We exclusively sell to the trade and industry. Please note our minimum order quantities and the minimum order value per delivery. We would be pleased to send you an offer that is tailored to your needs should you require special colours, deviating dimensions, bioplastics, or larger order quantities.

Plug-in connectors for square tubes, T-piece

VT1

Application: for square tubes
 Additional Info: for square tubes, T-pieces, half-shells
 suitable for arming with steel cores
 Material: polyamide
 Standard-Colour: black



Order No.	For tube	Pin length	Colour	PU*	MOQ**
17754.00	20 x 20 x 1,5	36	black	350	350
17756.00	25 x 25 x 1,5	51	black	150	150
17758.00	30 x 30 x 2,0	47	black	100	100

Please note that the product illustrations are exemplary images that could deviate from the ordered/delivered products.

All of the dimensions are in mm should nothing to the contrary be stated.

*PU = Packaging Unit, SW = Spanner opening, n.w. = not detachable, o. K. = excl. The head, o. B. = excl. The collar, m. R. = with the radius, MOQ = Minimum Order Quantity.

** MOQ: Parts with MOQ, set-up costs may apply.

We exclusively sell to the trade and industry. Please note our minimum order quantities and the minimum order value per delivery.
 We would be pleased to send you an offer that is tailored to your needs should you require special colours, deviating dimensions, bioplastics, or larger order quantities.

Plug-in connectors for square tubes, T-piece

VT2

Application: for square tubes
 Additional Info: for square tubes, T-pieces, one-piece
 Material: PA GF
 Standard-Colour: grey similar to RAL 7035



Order No.	For tube	Pin length	Colour	PU*	MOQ**
17755.00	20 x 20 x 1,5	30	grey	350	350
17757.00	25 x 25 x 2,0	40	grey	300	300

Please note that the product illustrations are exemplary images that could deviate from the ordered/delivered products.

All of the dimensions are in mm should nothing to the contrary be stated.

*PU = Packaging Unit, SW = Spanner opening, n.w. = not detachable, o. K. = excl. The head, o. B. = excl. The collar, m. R. = with the radius, MOQ = Minimum Order Quantity.

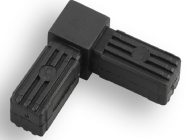
** MOQ: Parts with MOQ, set-up costs may apply.

We exclusively sell to the trade and industry. Please note our minimum order quantities and the minimum order value per delivery. We would be pleased to send you an offer that is tailored to your needs should you require special colours, deviating dimensions, bioplastics, or larger order quantities.

Plug-in connectors

Application: for square tubes
 Additional Info: for square tubes with right angles, half-shells suitable for arming with steel cores
 Material: polyamide
 Standard-Colour: black

VW1



Order No.	For tube	Pin length	Note	Colour	PU*	MOQ**
17739.00	20 x 20 x 1,5	36	-	black	500	500
17741.00	20 x 20 x 1,5	37	o. K.	black	750	750
17743.00	20 x 20 x 2,0	36	-	black	750	750
17744.00	25 x 25 x 1,5	52	-	black	250	250
17748.00	25 x 25 x 1,5	56	o. K.	black	350	350
17749.00	25 x 25 x 1,5	55	m. R.	black	350	350
17751.00	30 x 30 x 2,0	47	-	black	150	150
17753.00	30 x 30 x 2,0	47	o. K.	black	200	200

Please note that the product illustrations are exemplary images that could deviate from the ordered/delivered products.

All of the dimensions are in mm should nothing to the contrary be stated.

*PU = Packaging Unit, SW = Spanner opening, n.w. = not detachable, o. K. = excl. The head, o. B. = excl. The collar, m. R. = with the radius, MOQ = Minimum Order Quantity.

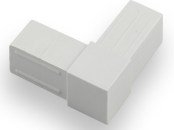
** MOQ: Parts with MOQ, set-up costs may apply.

We exclusively sell to the trade and industry. Please note our minimum order quantities and the minimum order value per delivery. We would be pleased to send you an offer that is tailored to your needs should you require special colours, deviating dimensions, bioplastics, or larger order quantities.

Plug-in connectors

Application: for square tubes
 Additional Info: for square tubes with right angles, one-piece
 Material: PA GF
 Standard-Colour: grey similar to RAL 7035

VW2



Order No.	For tube	Pin length	Colour	PU*	MOQ**
17742.00	20 x 20 x 1,5	30	grey	500	500
17750.00	25 x 25 x 2,0	40	grey	250	250

Please note that the product illustrations are exemplary images that could deviate from the ordered/delivered products.

All of the dimensions are in mm should nothing to the contrary be stated.

*PU = Packaging Unit, SW = Spanner opening, n.w. = not detachable, o. K. = excl. The head, o. B. = excl. The collar, m. R. = with the radius, MOQ = Minimum Order Quantity.

** MOQ: Parts with MOQ, set-up costs may apply.

We exclusively sell to the trade and industry. Please note our minimum order quantities and the minimum order value per delivery. We would be pleased to send you an offer that is tailored to your needs should you require special colours, deviating dimensions, bioplastics, or larger order quantities.